



Confidentialité et politiques
 Ce document est la propriété de ZAXE TECHNOLOGIES et ne peut être utilisé pour d'autres fins que celles pour lesquelles il a été préparé et soumis. Aucune reproduction ne peut être faite sans autorisation.

The information contained in this drawing is the sole property of zaxe technologies. Any reproduction in part or as a whole without the written permission is prohibited.

©2019 Tous les droits réservés / All rights reserved.

No. de produit / Product Part Number:

450-00066

Designation du produit / Product Name

FEED DROP ELECTRIC 24V

Titre du dessin / Drawing Title

INSTALLATION GUIDE

Révision / Revision Feuille / Sheet:

B 1 / 2

Matériau / Material specifications:

N/A

Unités / Units:

mm[in]

Standard Tolerances:

Inches
 X/X ± 1/16"
 X.XX" ± 0.03"
 X.XXX" ± 0.010"

Millimeters
 X.X ± 0.8
 X.XX ± 0.25

Angle
 X.X° ± 0.5°

Dernière mise à jour / Last update date:

2019-08-13

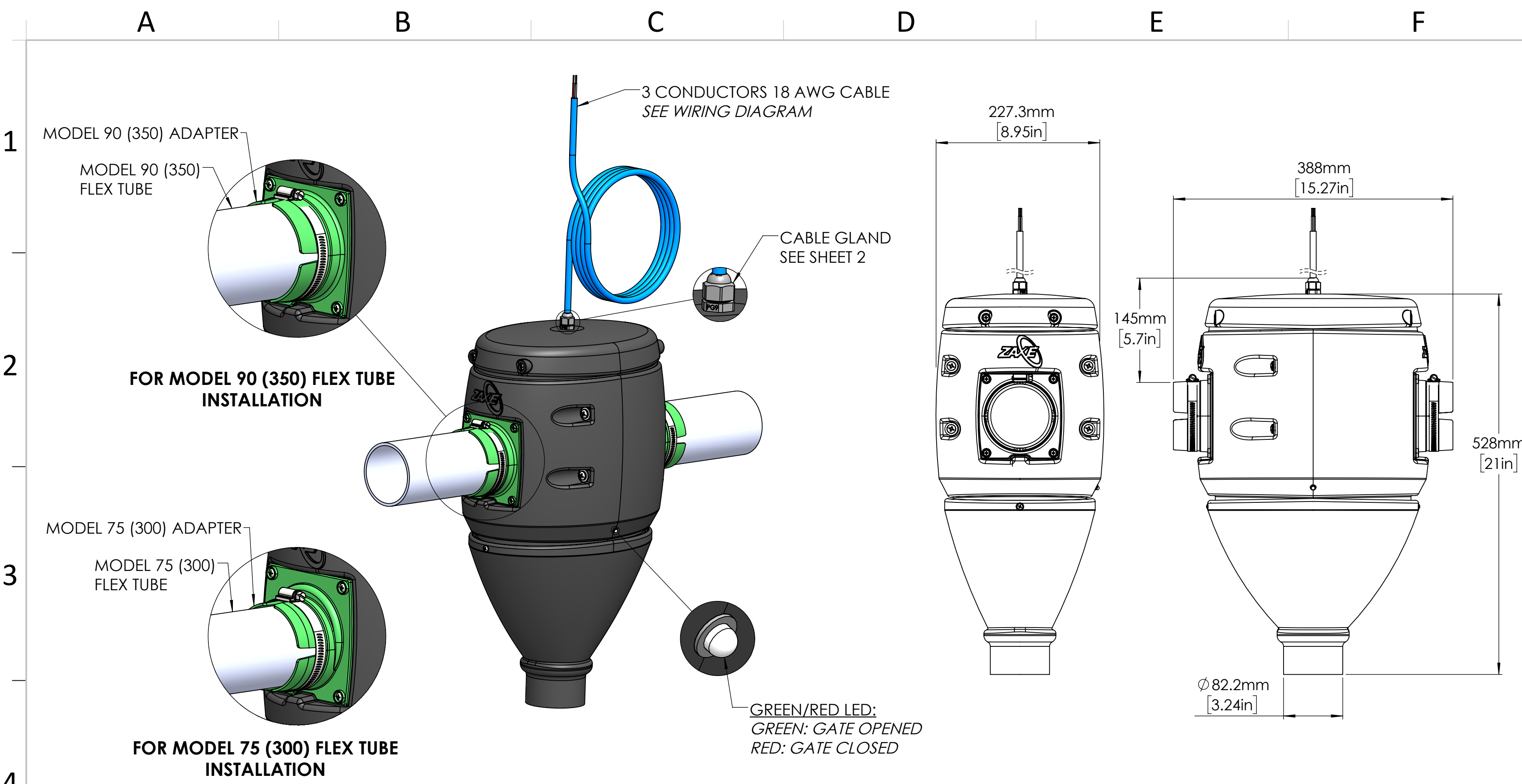
Dessiné par / Drawn by:

LJ

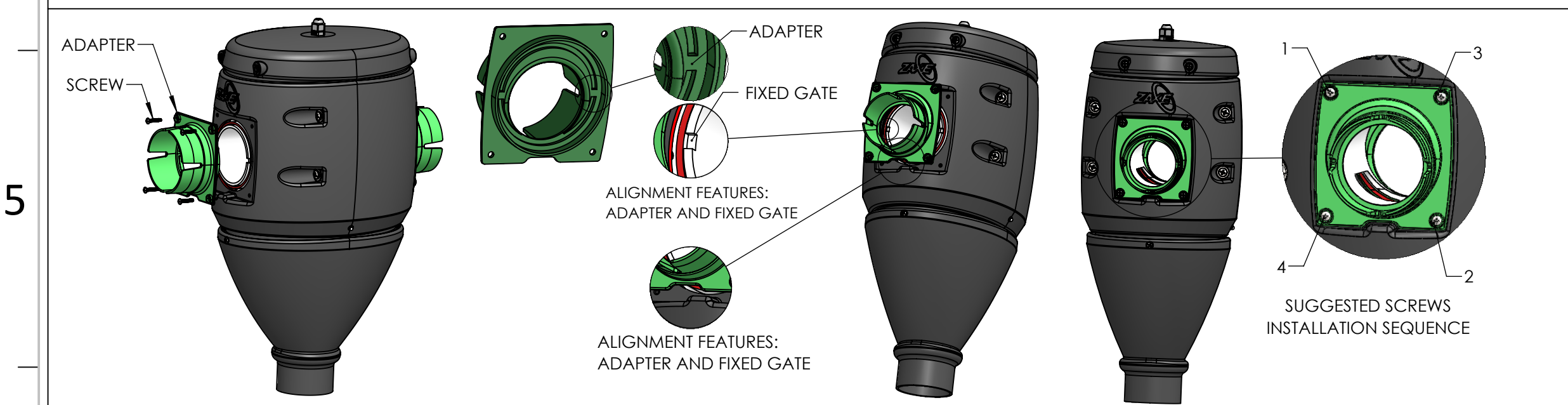
Approuvé par / Approved by:

Historique de révision / Revision history:

REV.	DESCRIPTION
A	INITIAL RELEASE
B	CABLE GLAND INSTAL. PROCEDURE ADDED



ADAPTER REPLACEMENT PROCEDURE

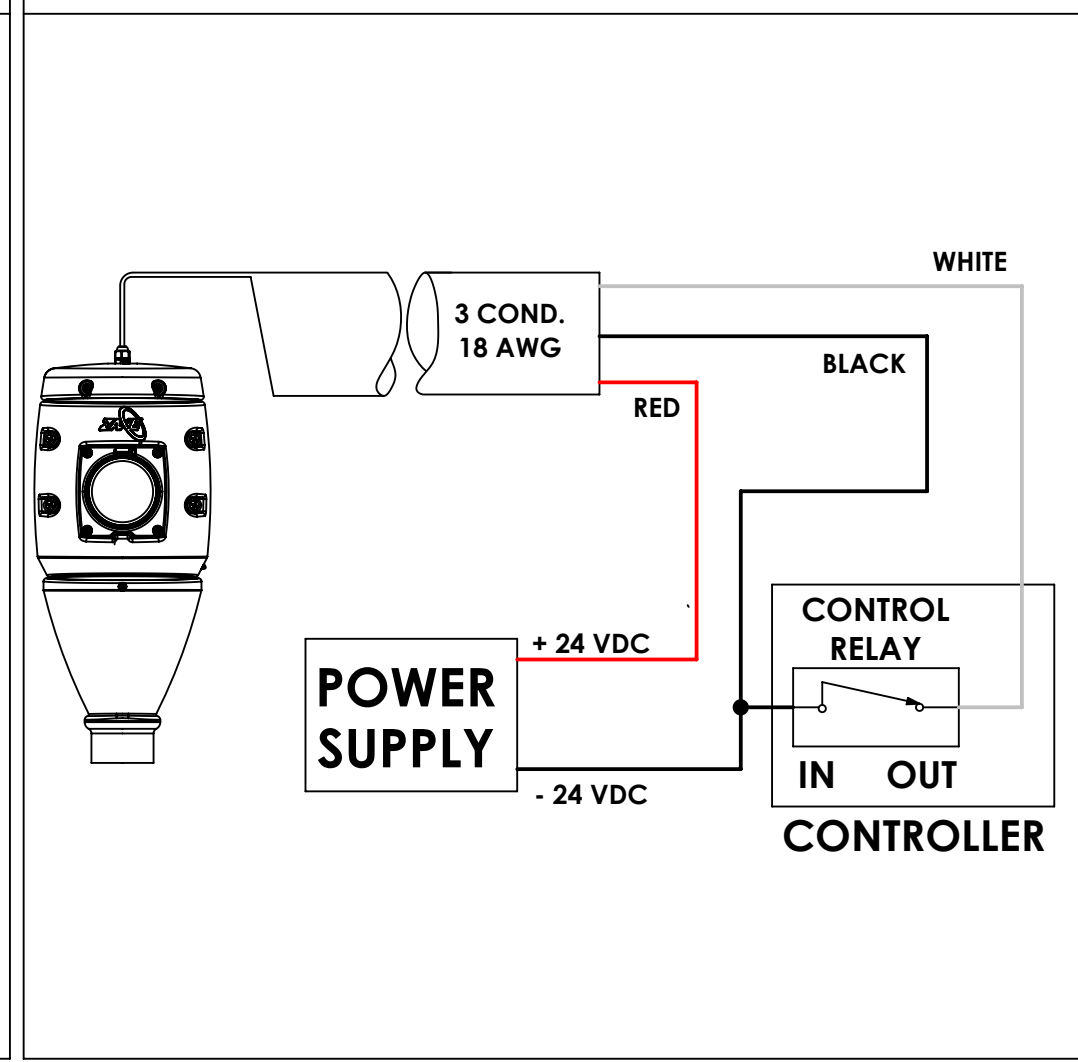


STEP 1: UNSCREW THE 4 MOUNTING SCREWS AND REMOVE THE ADAPTER.
CAUTION 1: DO NOT REMOVE THE TWO ADAPTERS AT THE SAME TIME. OTHERWISE A COMPLETE DISASSEMBLY OF THE PRODUCT WILL BE REQUIRED
CAUTION 2: MULTIPLE ASSEMBLY AND DISASSEMBLY MIGHT DAMAGE THREAD HOLES IN THE HOUSING.

STEP 2: ORIENT THE NEW ADAPTER AS SHOWN AND POSITION IT IN THE HOUSING BORE. ENSURE THAT THE SMALL TABS IN THE ADAPTER ARE ALIGNED WITH THE NOTCHES IN THE FIXED GATE. IF NECESSARY, USE ONE FINGER TO CENTER THE FIXED GATE IN THE HOUSING BORE.

STEP 3: ONE THE ADAPTER IS PROPERLY SEATED, INSTALL THE 4 MOUNTING SCREWS AND TORQUE THEM AS REQUIRED (IF NECESSARY, REMOVED THE PLASTIC CHIPS ON THE SCREWS BEFORE INSTALLATION)
REPEAT THESE 3 STEPS FOR THE SECOND ADAPTER

WIRING DIAGRAM





Confidentialité et politiques
Ce document est la propriété ZAXE TECHNOLOGIES et ne peut être utilisé pour d'autres fins que celles pour lesquelles il a été préparé et soumis. Aucune reproduction ne peut être faite sans autorisation.

The information contained in this drawing is the sole property of zaxe technologies. Any reproduction in part or as a whole without the written permission is prohibited.

©2019 Tous les droits réservés / All rights reserved.

No. de produit / Product Part Number:

450-00066

Designation du produit / Product Name

FEED DROP ELECTRIC 24V

Titre du dessin / Drawing Title

INSTALLATION GUIDE

Révision / Revision Feuille / Sheet:

B 2 / 2

Matériau / Material specifications:

N/A

Unités / Units:

mm[in]

Standard Tolerances:

Inches
X/X ± 1/16"
X.XX" ± 0.03"
X.XXX" ± 0.010"

Millimeters
X.X ± 0.8
X.XX ± 0.25

Angle
X.X° ± 0.5°

Dernière mise à jour / Last update date:

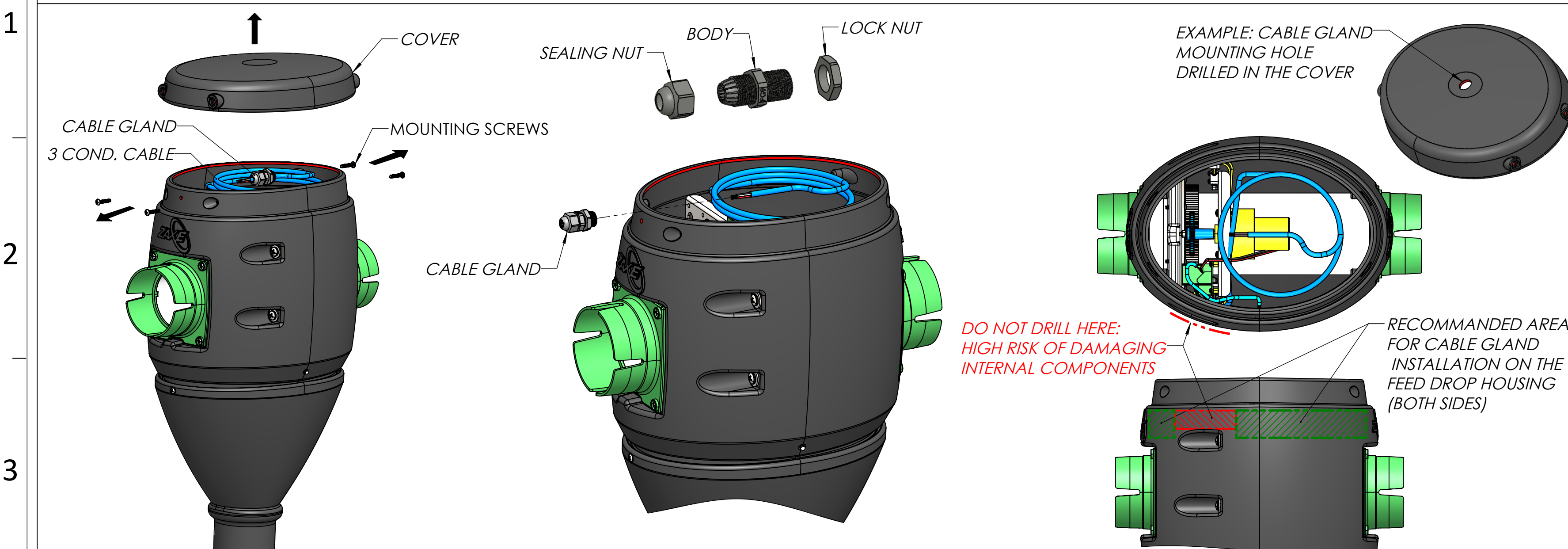
2019-08-13

Dessiné par / Drawn by:

LJ

Approuvé par / Approved by:

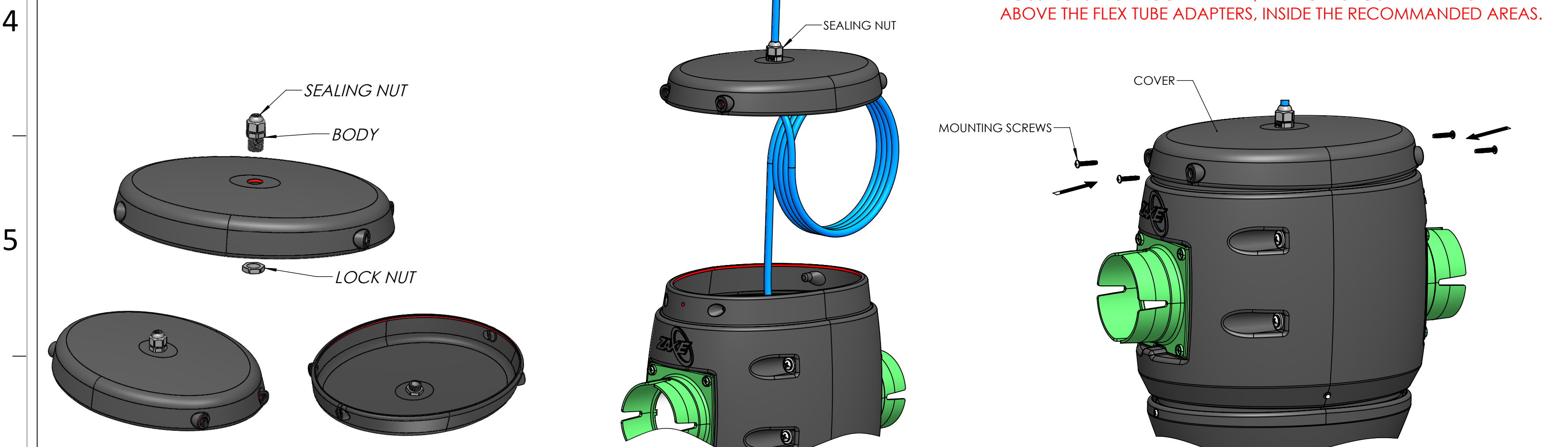
CABLE GLAND INSTALLATION PROCEDURE



STEP 1: UNSCREW THE 4 MOUNTING SCREWS AND REMOVE THE COVER. THE CABLE GLAND IS LOCATED INSIDE THE FEEDER AND THE CABLE GLAND IS TEMPORARY INSTALLED CLOSE TO THE WIRE ENDS.

STEP 2: UNSCREW THE CABLE GLAND SEALING NUT AND RELEASE THE CABLE GLAND FROM THE CABLE. DO NOT REMOVE THE LOCK NUT.

STEP 3: DRILL THE CABLE GLAND MOUNTING HOLE AT THE REQUIRED POSITION.
- THE HOLE SIZE SHOULD BE 15-16 mm [19/32 - 5/8 in]
- THE HOLE CAN BE LOCATED ANYWHERE ON THE COVER. IF THE DROP HOUSING IS MORE CONVENIENT, THE HOLE SHOULD ALWAYS BE ABOVE THE FLEX TUBE ADAPTERS, INSIDE THE RECOMMENDED AREAS.



STEP 4: INSTALL THE CABLE GLAND IN THE CHOSEN LOCATION (HERE IS SHOWN THE INSTALLATION OF THE CABLE GLAND ON THE COVER). USE A 22mm SOCKET TO RESTRAINT THE LOCK NUT WHILE TIGHTENING THE CABLE GLAND BODY WITH A 19 mm FLAT WRENCH.

STEP 5: RUN THE CABLE THROUGH THE CABLE GLAND. ONCE THE FINAL POSITION IS REACHED, USE A 19 mm FLAT WRENCH TO TIGHTEN THE SEALING NUT AND SECURE THE CABLE.

STEP 6: SLIDE THE COVER BACK IN PLACE AND SECURE IT USING THE 4 MOUNTING SCREWS.